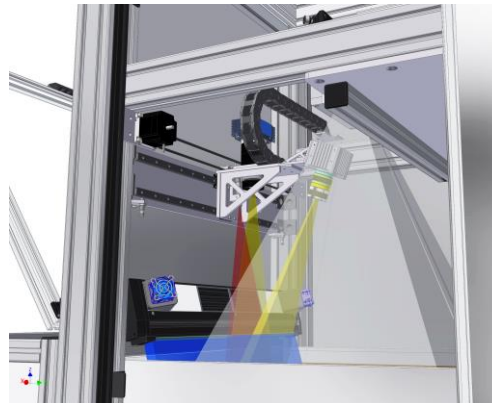


# 05 – INSPECTION MACHINE



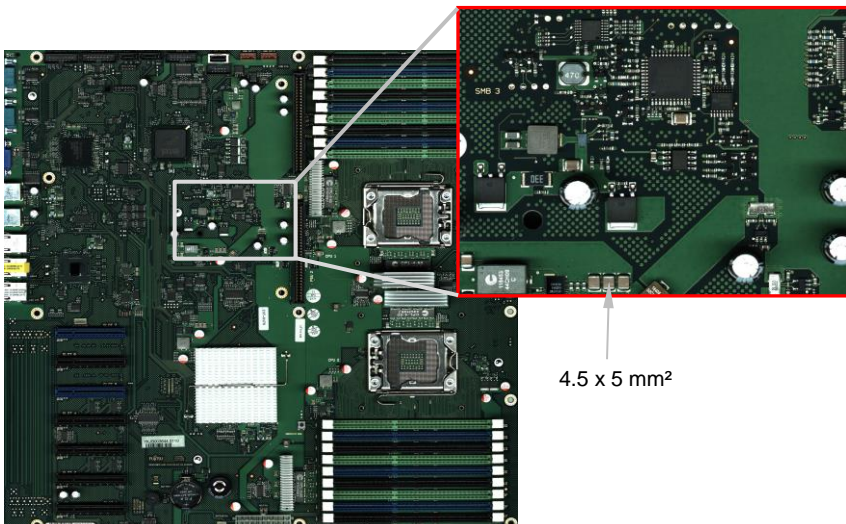
## MACHINE 2



machine 2 provides

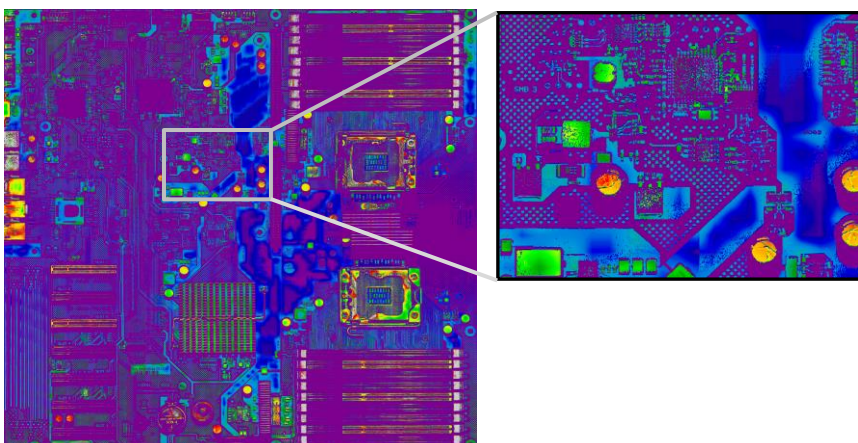
- 2D and 3D high resolution images
- identification of valuable materials (cf. poster 06)

## COLOR IMAGING



- line camera with 50  $\mu\text{m}$  resolution
- full PCB images with up to 100 MPixel
- basis for component identification by image data processing

## LASER 3D IMAGING



- 3D measurement by laser light section method
- height at each position on the PCB
- height displayed as false colour
- SMD components measurable down to  $0.5 \times 0.5 \times 1 \text{ mm}^3$